
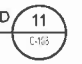

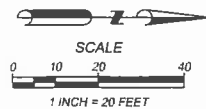
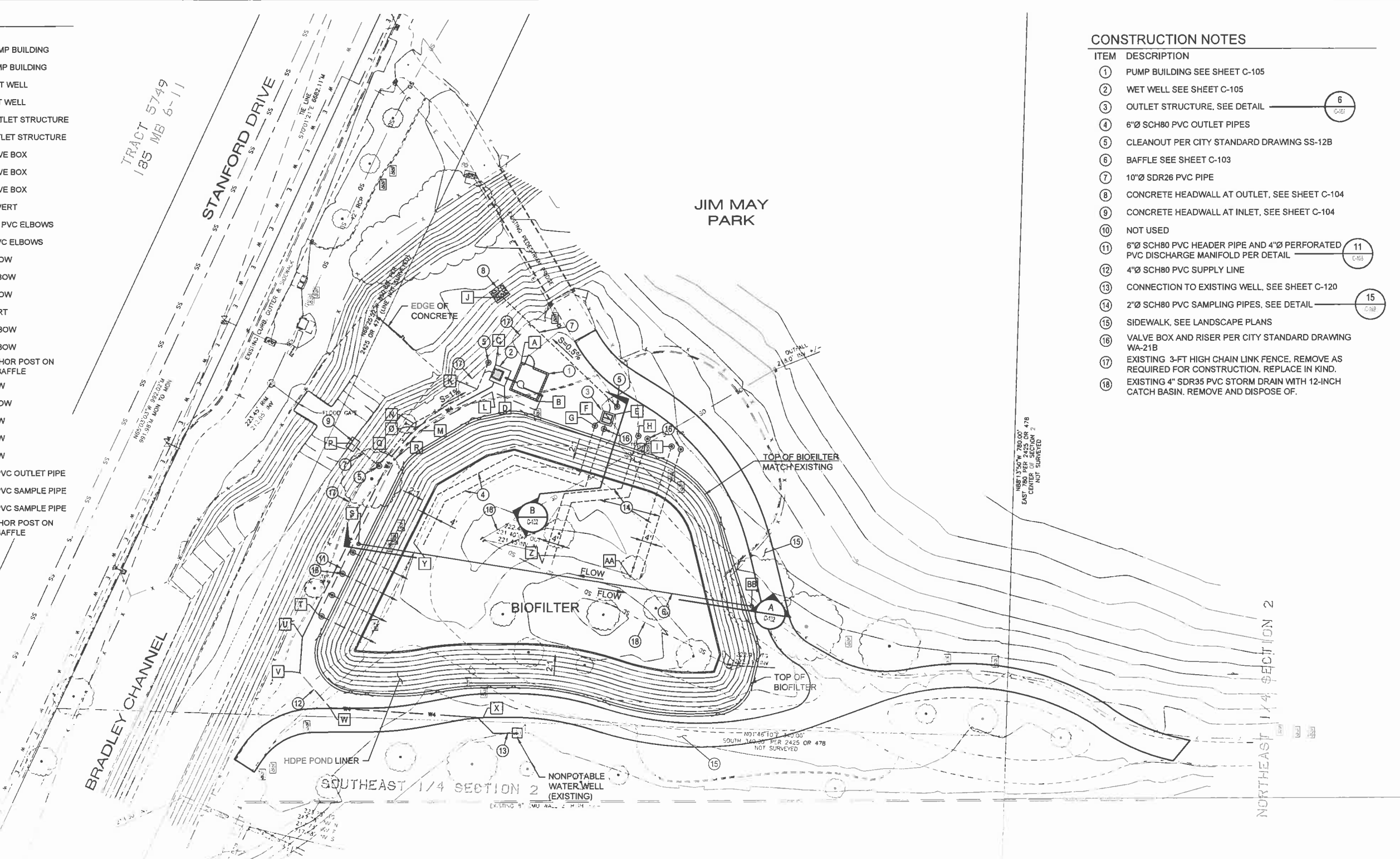


LAYOUT DATA

TAG	NORTHING	EASTING	DESCRIPTION
A	2185723.79	5835408.15	SW CORNER PUMP BUILDING
B	2185730.53	5835424.74	NE CORNER PUMP BUILDING
C	2185713.03	5835409.21	SW CORNER WET WELL
D	2185716.76	5835418.38	NE CORNER WET WELL
E	2185763.29	5835430.25	NW CORNER OUTLET STRUCTURE
F	2185756.77	5835433.64	SE CORNER OUTLET STRUCTURE
G	2185754.86	5835435.02	CENTER OF VALVE BOX
H	2185773.12	5835439.31	CENTER OF VALVE BOX
I	2185787.14	5835443.75	CENTER OF VALVE BOX
J	2185715.93	5835380.94	OUTLET PIPE INVERT
K	2185705.29	5835419.49	10" 22.5° & 11.25° PVC ELBOWS
L	2185711.61	5835420.63	6" 45° & 11.25° PVC ELBOWS
M	2185681.19	5835436.97	6" 22.5° PVC ELBOW
N	2185678.53	5835433.85	10" 22.5° PVC ELBOW
O	2185679.91	5835435.38	4" 22.5° PVC ELBOW
P	2185652.45	5835442.16	INLET PIPE INVERT
Q	2185669.52	5835447.48	4" 11.25° PVC ELBOW
R	2185671.20	5835448.59	6" 11.25° PVC ELBOW
S	2185660.26	5835476.59	CENTER OF ANCHOR POST ON SOUTH END OF BAFFLE
T	2185638.64	5835514.27	6" 90° PVC ELBOW
U	2185631.76	5835523.64	4" 22.5° PVC ELBOW
V	2185630.75	5835538.57	4" 45° PVC ELBOW
W	2185643.57	5835553.24	4" 45° PVC ELBOW
X	2185707.93	5835557.62	4" 45° PVC ELBOW
Y	2185678.74	5835484.11	END 6" SCH80 PVC OUTLET PIPE
Z	2185732.71	5835492.76	END 2" SCH80 PVC SAMPLE PIPE
AA	2185769.73	5835498.69	END 2" SCH80 PVC SAMPLE PIPE
BB	21858820.79	5835510.71	CENTER OF ANCHOR POST ON NORTH END OF BAFFLE

CONSTRUCTION NOTES

- 1 PUMP BUILDING SEE SHEET C-105
- 2 WET WELL SEE SHEET C-105
- 3 OUTLET STRUCTURE, SEE DETAIL 
- 4 6" SCH80 PVC OUTLET PIPES
- 5 CLEANOUT PER CITY STANDARD DRAWING SS-12B
- 6 BAFFLE SEE SHEET C-103
- 7 10" SDR26 PVC PIPE
- 8 CONCRETE HEADWALL AT OUTLET, SEE SHEET C-104
- 9 CONCRETE HEADWALL AT INLET, SEE SHEET C-104
- 10 NOT USED
- 11 6" SCH80 PVC HEADER PIPE AND 4" PERFORATED PVC DISCHARGE MANIFOLD PER DETAIL 
- 12 4" SCH80 PVC SUPPLY LINE
- 13 CONNECTION TO EXISTING WELL, SEE SHEET C-120
- 14 2" SCH80 PVC SAMPLING PIPES, SEE DETAIL 
- 15 SIDEWALK, SEE LANDSCAPE PLANS
- 16 VALVE BOX AND RISER PER CITY STANDARD DRAWING WA-21B
- 17 EXISTING 3-FT HIGH CHAIN LINK FENCE. REMOVE AS REQUIRED FOR CONSTRUCTION. REPLACE IN KIND.
- 18 EXISTING 4" SDR35 PVC STORM DRAIN WITH 12-INCH CATCH BASIN. REMOVE AND DISPOSE OF.



P.O. BOX 1604
 ABBOTT GRAND, OR 97101 (503) 904-6330

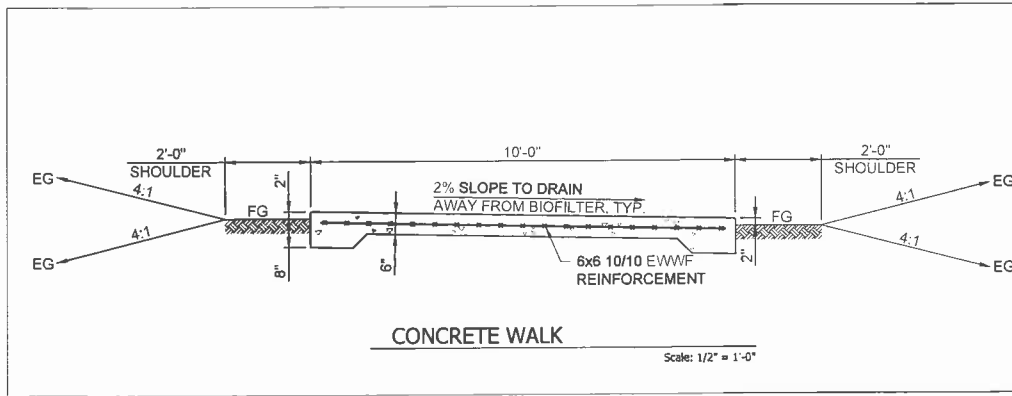
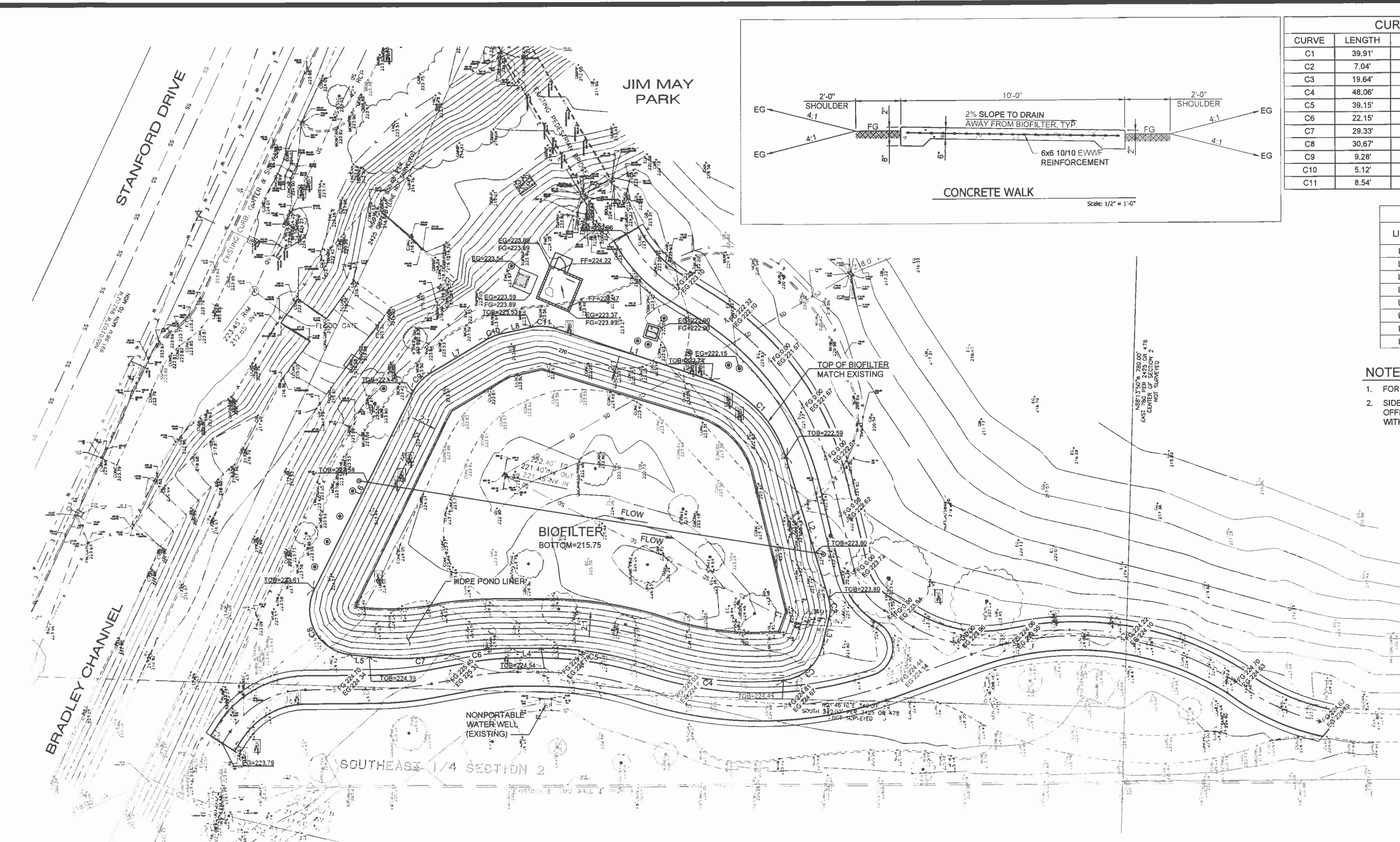
LETTER	DATE	BY	APPROVED	REVISION
Δ				
Δ				
Δ				
Δ				

CITY OF SANTA MARIA
 DEPARTMENT OF PUBLIC WORKS

STEVE B. KAHN ::: PUBLIC WORKS DIRECTOR / CITY ENGINEER R.C.E. 42350

JIM MAY PARK
 DENITRIFICATION BIOFILTER PROJECT
 SITE PLAN

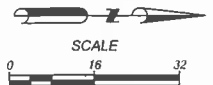
DRAWN BY:	JPF
CHECKED BY:	
DATE:	March 2016
SHEET	C-101
3 of 37 SHEETS	
REFERENCES	
FILE NUMBER	I-2039.03



CURVE TABLE				
CURVE	LENGTH	RADIUS	DELTA	TANGENT
C1	39.91'	42.00'	54.45°	21.61'
C2	7.04'	13.00'	31.01°	3.61'
C3	19.64'	16.00'	70.32°	11.27'
C4	48.06'	113.48'	24.26°	24.39'
C5	39.15'	120.50'	18.61°	39.15'
C6	22.15'	123.47'	10.28°	11.10'
C7	29.33'	99.96'	16.81°	14.77'
C8	30.67'	16.00'	109.83°	22.78'
C9	9.28'	16.00'	33.22°	4.77'
C10	5.12'	16.00'	18.35°	2.58'
C11	8.54'	16.00'	30.59°	4.38'

LINE TABLE		
LINE	LENGTH	BEARING
L1	58.04'	S18°31'02.16\"W
L2	52.34'	N72°57'47.51\"E
L3	10.34'	S76°01'46.19\"E
L4	10.10'	S0°00'00.00\"W
L5	6.96'	S6°31'41.44\"W
L6	78.15'	N63°38'24.44\"W
L7	23.90'	N30°25'17.26\"W
L8	11.26'	N12°04'30.56\"W

- NOTES:**
- FOR SIDEWALK LAYOUT SEE SHEET L-3
 - SIDEWALK CENTERLINE ELEVATIONS ARE OFFERED AT LOCATIONS CORRELATING WITH LAYOUT PLAN (SHEET L-3)



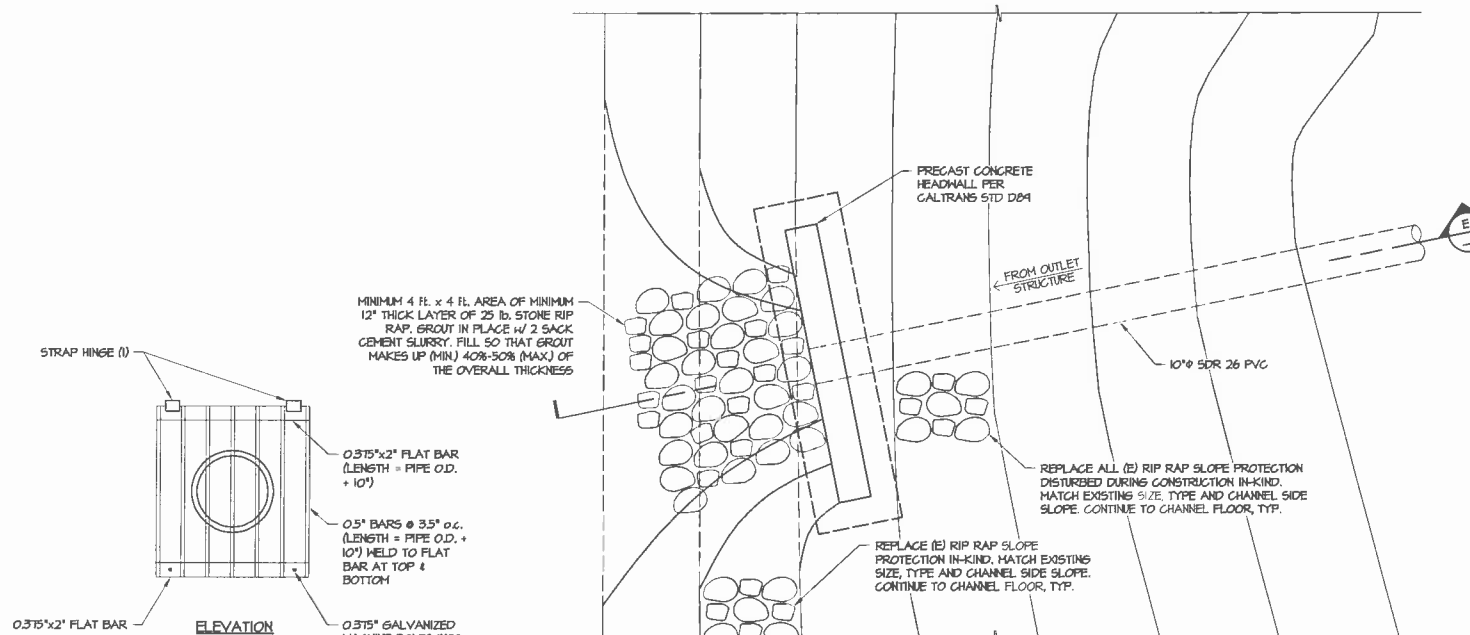
LETTER	DATE	BY	APPROVED	REVISION

CITY OF SANTA MARIA
DEPARTMENT OF PUBLIC WORKS

STEVE B. KAHN ::: PUBLIC WORKS DIRECTOR / CITY ENGINEER R.C.E. 42350

**JIM MAY PARK
DENITRIFICATION BIOFILTER PROJECT
BIOFILTER LAYOUT AND GRADING**

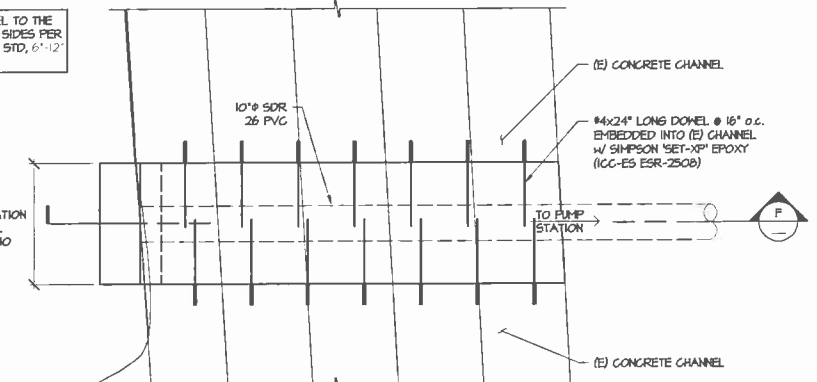
DRAWN BY: JPF
CHECKED BY:
DATE: March 2016
SHEET **C-101A**
4 of 37 SHEETS
REFERENCES
FILE NUMBER
I-2039.04



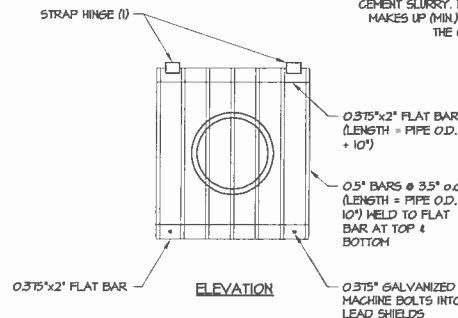
OUTLET DETAIL
NTS.

TRENCH WILL BE PARALLEL TO THE PIPE - EQUIDISTANT BOTH SIDES PER TRENCH DETAIL AND CITY STD, 6'-12" EACH SIDE OF PIPE

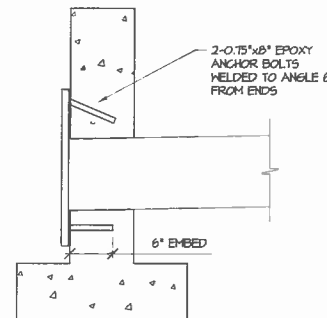
MIDT AS REQD FOR EXCAVATION OF TRENCH FOR NEW PIPE. SEE TRENCH DETAIL IT, C-110



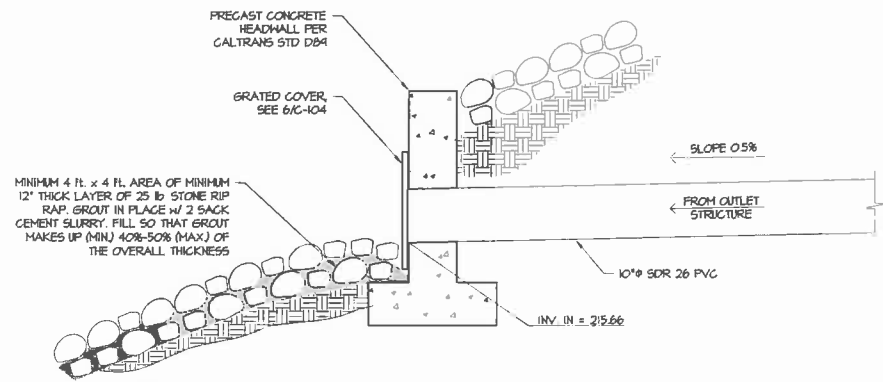
INLET DETAIL
NTS.



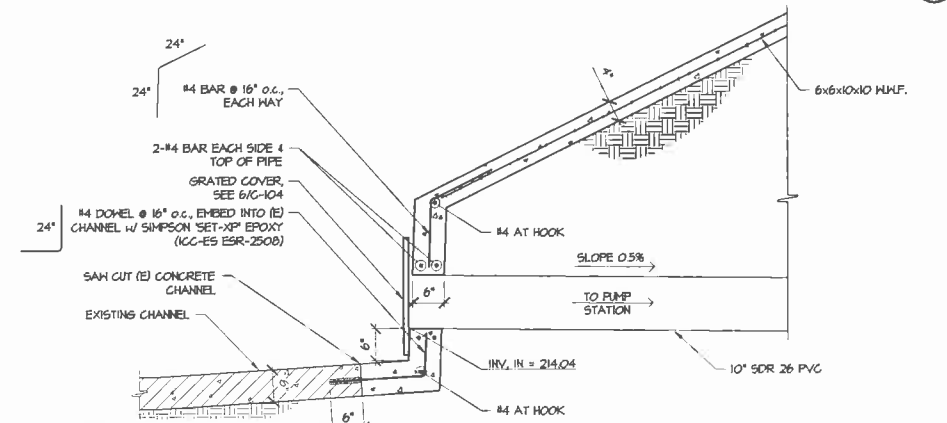
ELEVATION



SECTION



SECTION - OUTLET
NTS.



SECTION - INLET
NTS.

NOTES: (1)
1. WELD STRAP HINGE TO 0.25"x4"x4" ANGLE
2. ALL EXPOSED METAL SHALL BE HOT DIPPED GALVANIZED AFTER PRODUCTION

GRATED COVER
NTS.

6

F



THESE DRAWINGS, NOTES AND DETAILS ARE INSTRUMENTS OF SERVICE AND ARE THE PROPERTY OF SMITH STRUCTURAL GROUP, LLP. ALL DRAWINGS, INFORMATION, SPECIFICATIONS, IDEAS, DESIGNS AND ARRANGEMENTS REPRESENTED WITHIN THESE DOCUMENTS SHALL REMAIN THE PROPERTY OF THE ENGINEER. NO PART THEREOF SHALL BE COPIED, DISCLOSED TO OTHERS OR USED IN CONNECTION WITH ANY WORK OR PROJECT OTHER THAN THE SPECIFIC PROJECT FOR WHICH THEY HAVE BEEN PREPARED AND DEVELOPED WITHOUT THE EXPRESSED WRITTEN CONSENT OF THE ENGINEER. COPYRIGHT © 2016

LETTER	DATE	BY	APPROVED	REVISION
D				
C				
B				
A				

CITY OF SANTA MARIA
DEPARTMENT OF PUBLIC WORKS

STEVEN B. KAHN :: PUBLIC WORKS DIRECTOR / CITY ENGINEER R.C.E. 42350

JIM MAY PARK
DENITRIFICATION BIOFILTER PROJECT
INLET AND OUTLET DETAILS

DRAWN BY: KAK
CHECKED BY: JMK
DATE: MAR. 31, 2016
SHEET **C-104**
8 of 37 SHEETS
REFERENCES

FILE NUMBER
I-2039.08